

Dynamic Merge

WebWorks Help 5.0 output that contains multiple books (two or more) can be merged dynamically. Instructions for dynamically merging WebWorks Help 5.0 are available. Currently Quadralay maintains a vb script called: **wwh5merge.vbs** that can be used to perform the actual merge operation.

Contents
1. Dynamic Merge
1. Why is it Useful?
2. Limitations
3. Merging by Hand
4. Automating Dynamic Merge
1. Example using AutoMap and DMerge script
2. Stationery Requirements
3. Source Content Requirements
4. Running wwh5merge.vbs Using Windows CLI
5. Under the Hood
1. Changing the Volume Order
2. Adding Additional Group-Topics

Why is it Useful?

There are many applications of Dynamic Merge for WebWorks Help, but the underlying usefulness comes from the fact that you can take 2 or more independently generated WebWorks Help help-sets and combine them together, creating what appears to be a single and unified help-set of all the volumes merged together in a controllable display order. Some example uses:

- Breaking large projects into multiple, smaller projects.
- Use an end-user installation script to merge separate help-sets based on the end-user's needs.

Limitations

- Does not resolve hypertext links and cross-references between documents that are not in the same ePublisher project.

Merging by Hand

Any two or more generated WebWorks Help 4 or 5 volumes can be merged without using any script, however it is somewhat manual and requires post editing of certain output files. This should not be attempted without detailed knowledge of the WebWorks Help format.

Automating Dynamic Merge

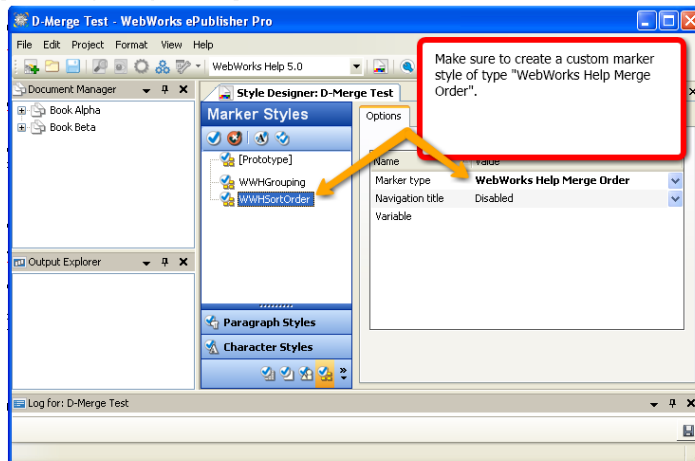
Example using AutoMap and DMerge script

Demonstrates how to use the autopmap command line, **wwh5merge.vbs** script, and multiple express projects to create a unified help volume.

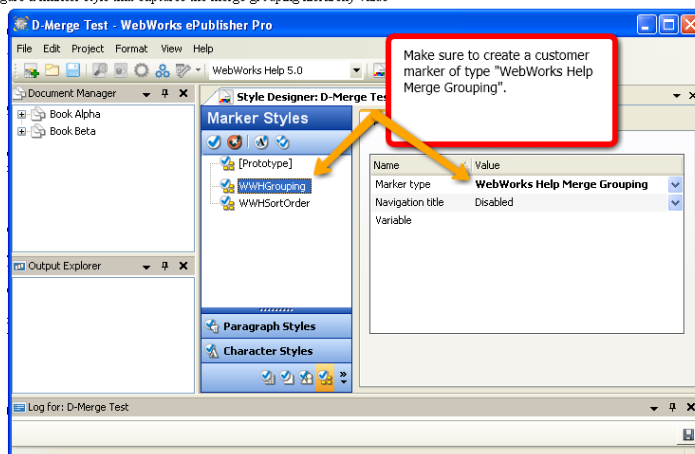
- Ready-to-use zip file at: [DynamicMerge.zip](#). Contains dmerge script, sample projects, stationery, and windows batch file.

Stationery Requirements

- Configure a marker style that captures the merge order value



- Configure a marker style that captures the merge grouping hierarchy value



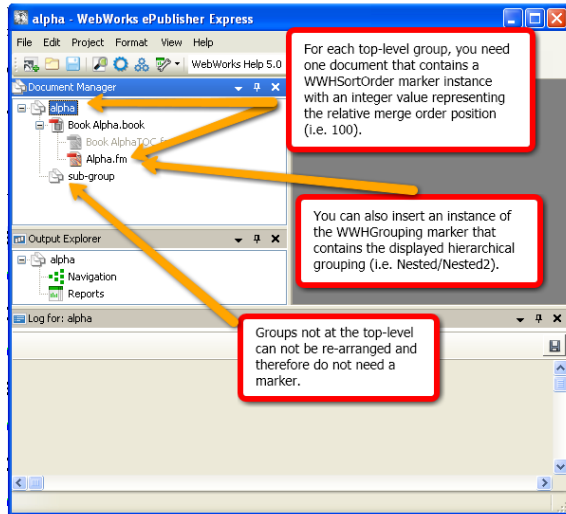
Source Content Requirements

It is required that for every top-level ePublisher group, there is one document that contains a marker instance with the value of the merged sort order.

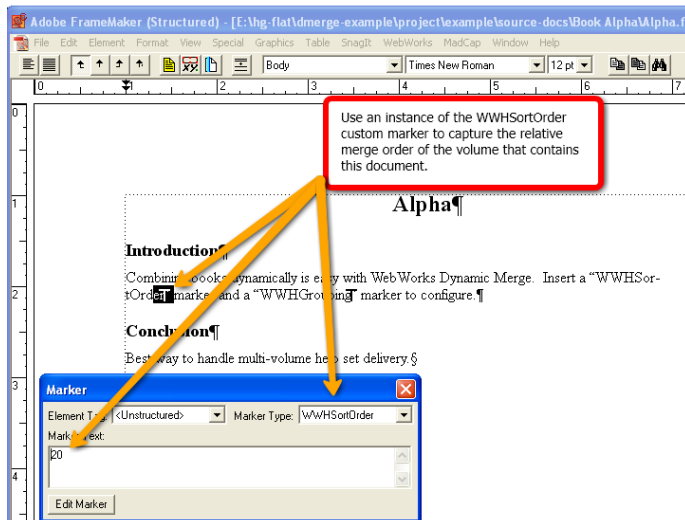
- Available only in ePublisher 9.3 and above.

Prior to ePublisher 9.3 you were required to create an **info.txt** file in the **wwhdata** folder for each book (i.e. Book Alpha, Book Beta) (See below, "Under the Hood").

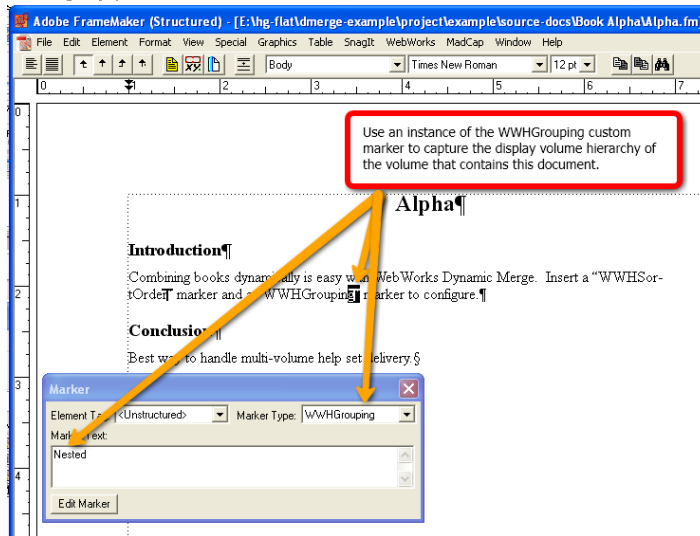
- ePublisher Document Manager



- Marker with merge order value



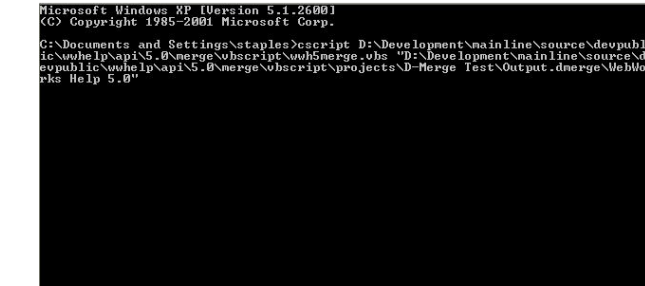
- Marker with merge display value



Running wwh5merge.vbs Using Windows CLI

Open command prompt and type the following:
cscript [path to wwH5merge.vbs] "[path to WebWorks Help 5.0 output folder]"

Windows CLI

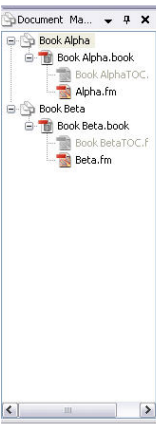


Under the Hood

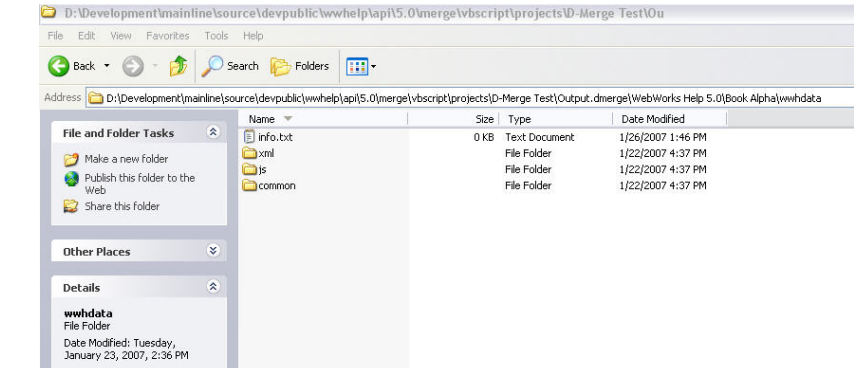
This section describes what the **wwH5merge.vbs** script is doing to the help volumes in order to create a final merged volume that is in the proper order.

Our example WebWorks Help 5.0 output contains two books (also known as groups) Book Alpha and Book Beta. Each of these books appear as top level groups in the ePublisher Document Manager (see below).

Document Manager



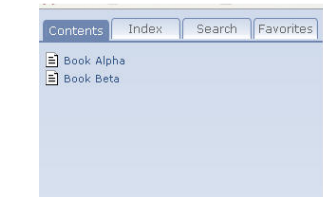
Volume Order in info.txt



The **info.txt** file can be empty or contain sort order information, contain additional group information, or both; however, **info.txt** must be present in order for the dynamic merge script (**wwH5merge.vbs**) to work correctly.

If **info.txt** is empty, the resultant merged WebWorks Help 5.0 helpset will display the default merge behavior, with both groups appearing as top level.

Default Merging

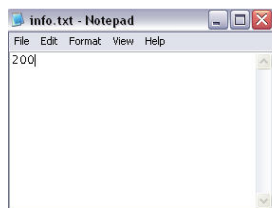


Changing the Volume Order

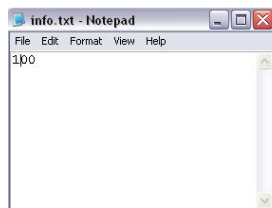
The sort order of each book can be changed by adding a numerical value to the first line of **info.txt**. For example, to display Book Alpha and Book Beta in reversed order, open **info.txt** for Book Alpha and enter 200 on the first line (See Figure 4). Then, open **info.txt** for Book Beta and enter 100 on the first line (See Figure 5).

info.txt for Book Alpha

info.txt for Book Alpha

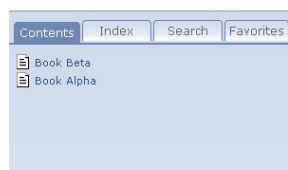


info.txt for Book Beta



The resultant merged ?WebWorksHelp 5.0 helpset will display the specified sort behavior, with both groups appearing in reversed order (see below).

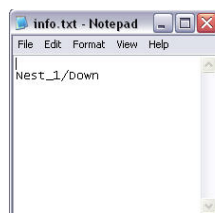
Merge Order Modified



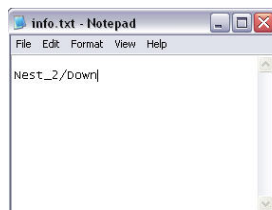
Adding Additional Group-Topics

Additional group-topics can be added to the display plane by specifying your desired hierarchy in the second line of *info.txt*. For example, if you would like to nest Book Alpha under **Nest_1/Down** you will need to enter **Nest_1/Down** in the second line of *info.txt* (See Figure 7). If you would like to nest Book Beta under **Nest_2/Down**, you will need to enter **Nest_2/Down** in the second line of *info.txt* (See Figure 8).

info.txt for Book Alpha

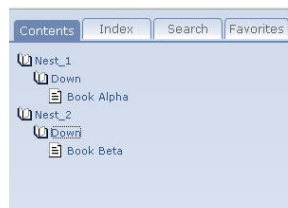


info.txt for Book Beta



The resultant merged ?WebWorksHelp 5.0 helpset will display the additional group-topics (See Figure 9).

Merge Groups Created



NOTE: You can specify both sort order and additional group-topics in *info.txt* for the merged helpsystem by including a numerical value (i.e. 100) in the first line and group-topic hierarchy (i.e. Nest/Down) in the second line.